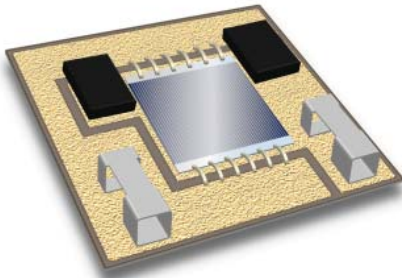


CTJ Terrestrial Receiver Assembly

Solar Cell Receivers for Terrestrial Concentrator Photovoltaics



TERRESTRIAL PHOTOVOLTAICS



CTJ Receiver Assembly

Features

- Bypass diodes
- Low thermal impedance package
- External heat sink compatible
- Latest CPV solar cell technology
- Custom CPV receiver design services available

39%
PEAK EFFICIENCY

The Concentrator Triple Junction Receiver Assembly takes the world class efficiency of EMCORE's Space Solar Cells and combines it with state-of-the-art packaging technology to create the most efficient CPV assembly available today. Utilizing advanced, high-speed manufacturing and test equipment, EMCORE produces the highest quality receivers in the world to meet the rigorous demands of CPV applications.

EMCORE also manufactures custom designed solar cells and receivers to exact customer specifications. Working closely together, the EMCORE team is able to develop and provide solutions for customer needs as they arise. From CTJ solar cell sizes to custom integrated receiver assemblies, EMCORE is ready to partner and bring new technology to market together.

Additional Information

- The receiver assembly utilizes EMCORE's 1 cm² Concentrating Triple Junction Solar Cell (CTJ)
- Cladded ceramic substrate with high thermal conductivity
- Metalized back plane is electrically isolated from the front side metallization
- The CTJ cell is interconnected with gold (Au) ribbon bonds
- High-speed automated assembly with low labor content

Ordering Information

Samples are available upon qualification.

To order, please contact our sales team at [505-332-5000](tel:505-332-5000)

or by email at photovoltaic-sales@emcore.com.

**MADE IN
USA**